



Predictive maintenance and alerting tools by Sensatek.



Recommending corrective action, is a time-consuming process.

- Hours collecting data and generating corrective action reports.
- Recommendations may not be accepted, because data does not tell the complete story.

Engineers need a complete story when recommending corrective action.





Lizardeye

Smart infrared and optical cameras capture anomalies and report the trend that has led to the event.

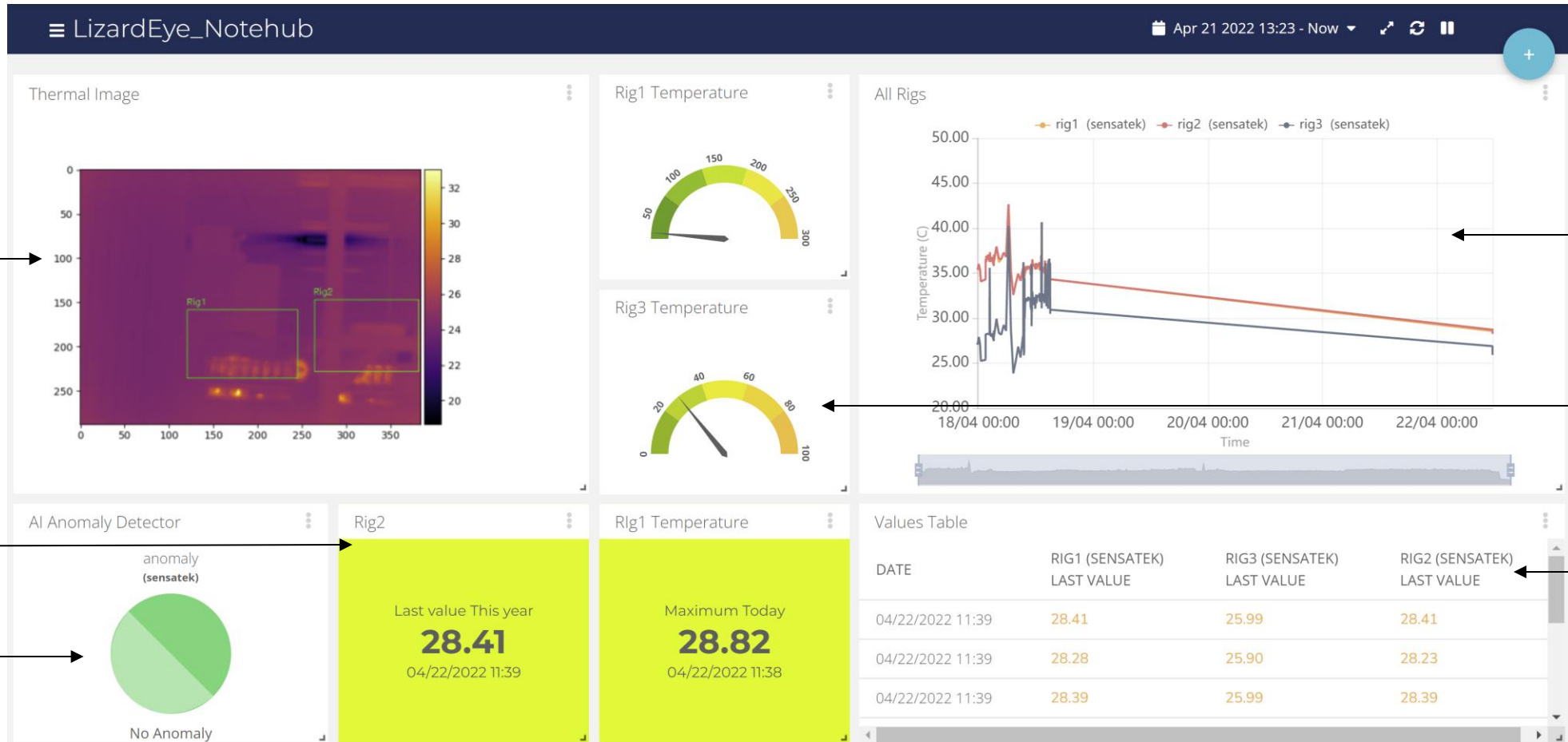
- A low-power wireless camera takes pictures regularly of a specific area of concern.
- At the camera a neural net assesses the pictures and reports specific relevant information wirelessly.
- And all these states can be reported as discrete, simple values – as time-series data.
- Confidence data is also sent in order to know how confident evaluations are.
- All photos are saved and can be sent wirelessly on demand.
- Highly secure options are available that prevent image transmission and even auto-delete stored images.





LizardEye

Software includes access to IoT connectivity



Thermal Image of the equipment/parts being monitored

Shows the last maximum temperature value

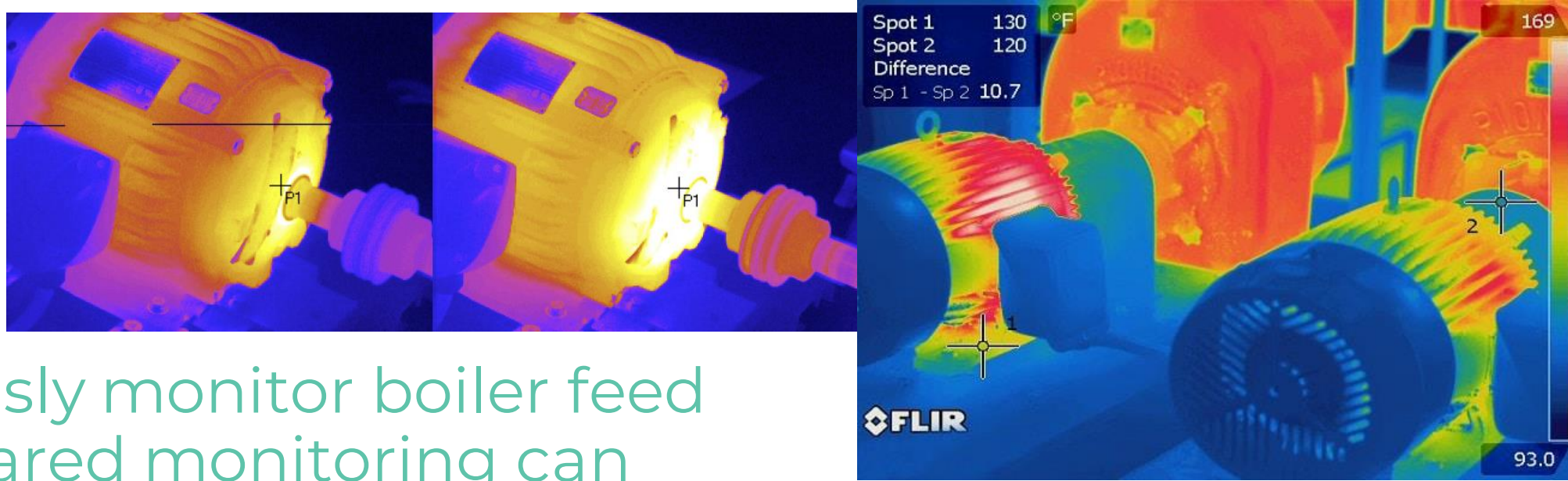
Event triggered using AI anomaly detector

Temperature/Time history plot of the monitored equipment/parts

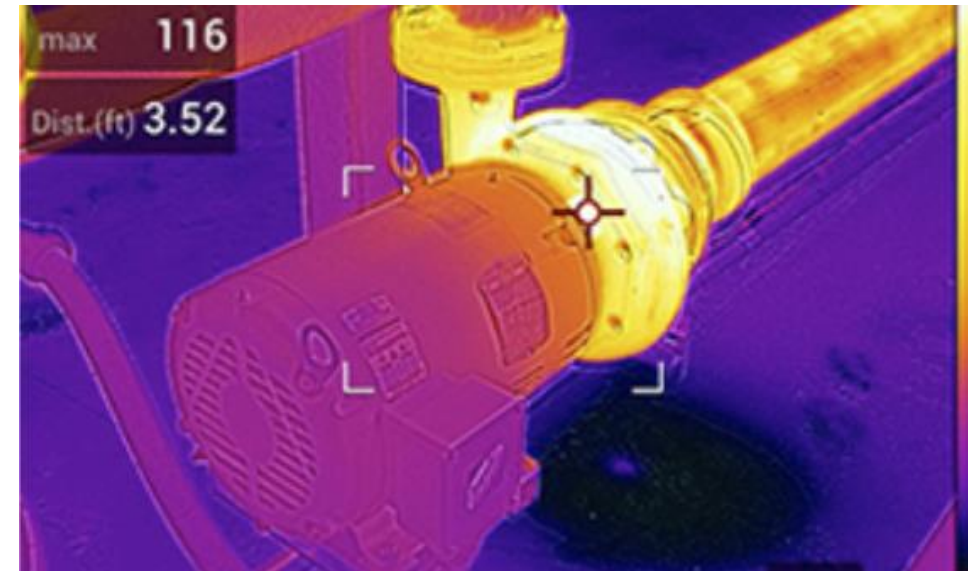
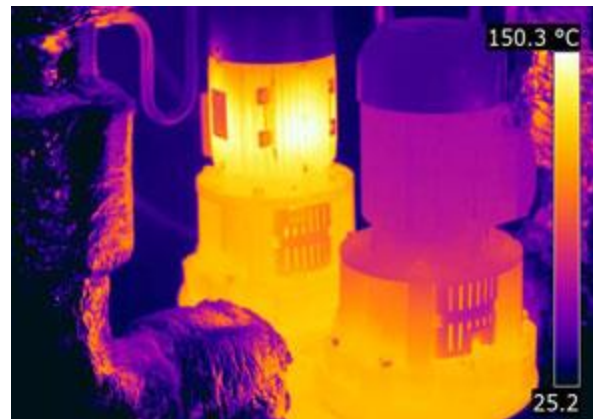
Temperature Gauge

Values Table showing temperature trend data

Use Cases

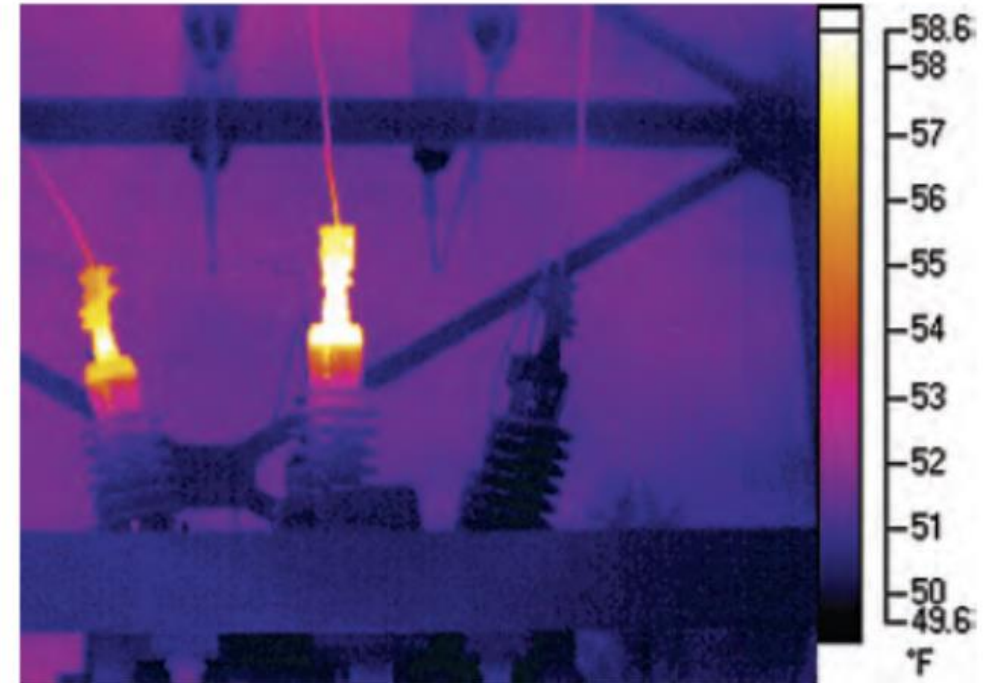
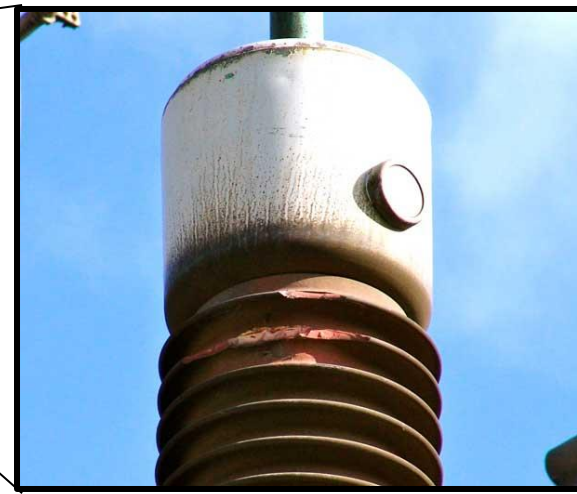
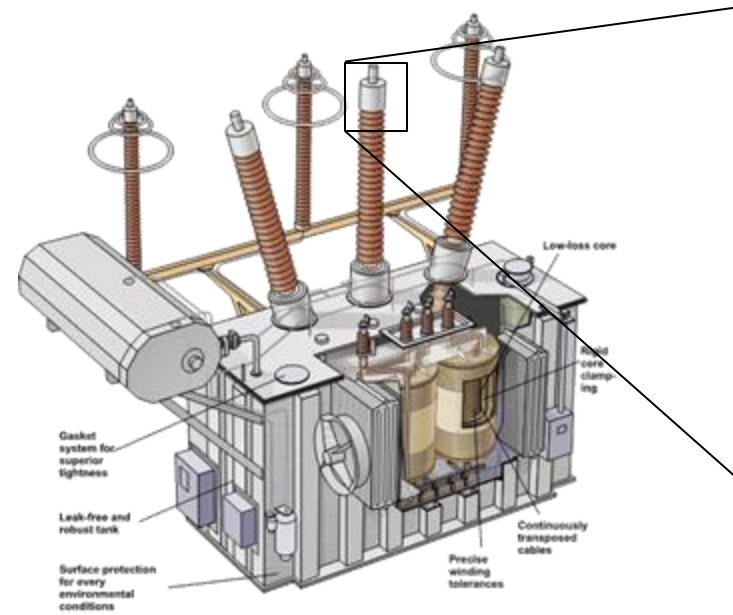


Continuously monitor boiler feed pump infrared monitoring can detect bearing overheating, internal fluid leaks, and external oil leaks.



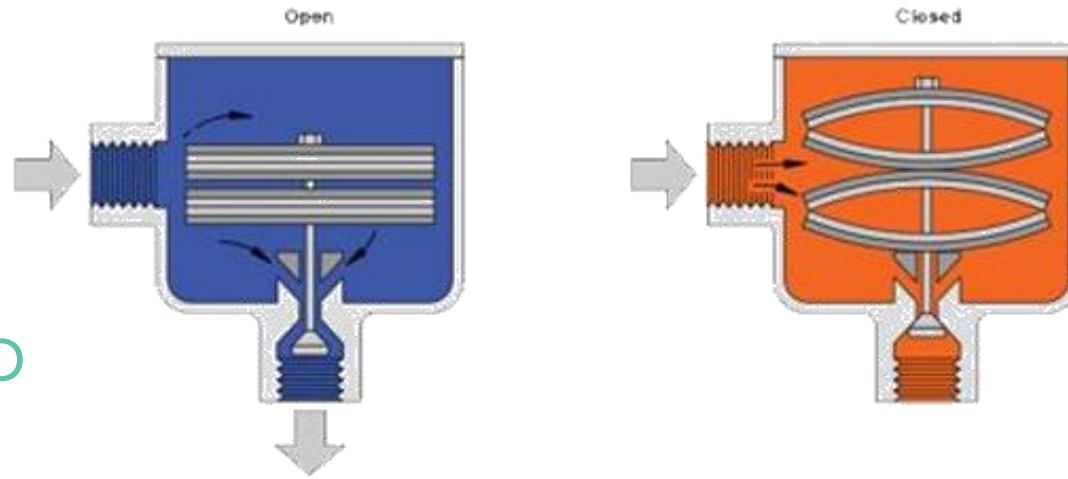
Continuously monitor transformer bushings.

Trend temperatures and generate alerts.

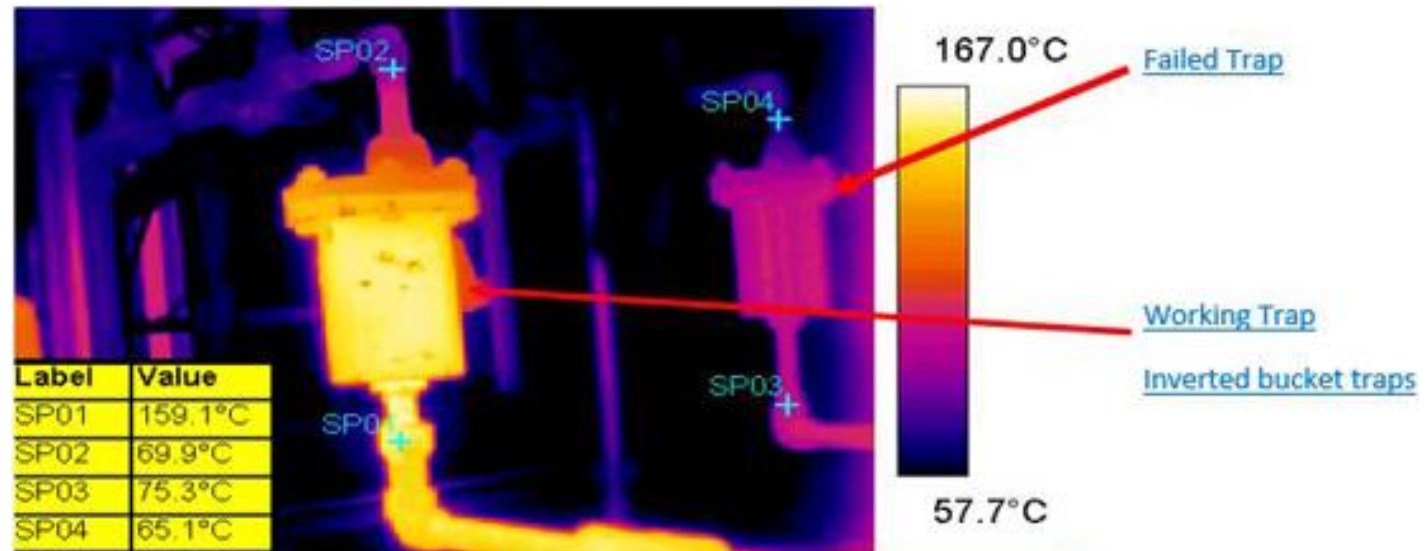


Continuous Steam Trap monitoring:

Use Infrared to detect failed steam traps

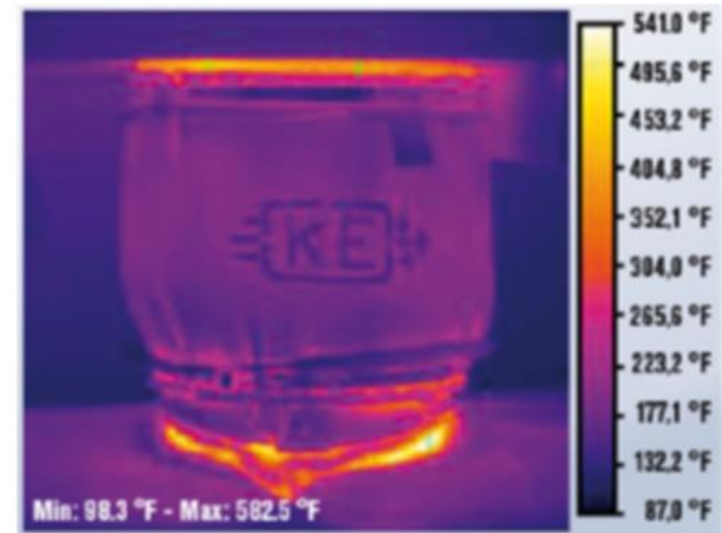


Thermostatic Trap



Continuous Heat Recovery Steam Generator (HRSG) Seal Monitoring:

Early detection of bleed-through for predictive maintenance



Do any applications come to mind?